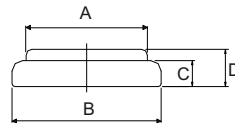


CR2032-P/H Specification

Primary Lithium Manganese Dioxide Battery

Nominal Voltage	3V
Nominal Capacity	245mAh
Continuous Standard Load	15K Ω
Operating Temperature	-30° - 65°C
Weight	3.2g
Max. Continuous Discharge	6mA
Max. Pulse Discharge	20mA



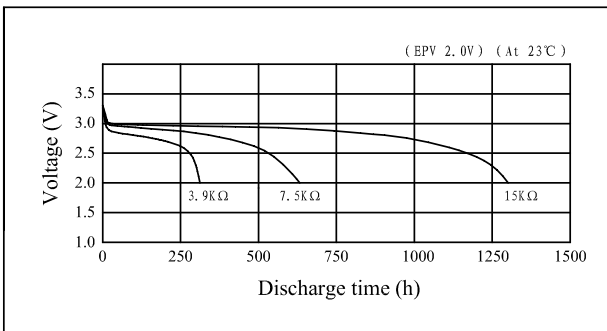
A = $\varnothing 17.5$
 B = $20.0^{+0.25}$
 C = 2.46
 D = $3.2^{+0.15}$

Dimension: mm

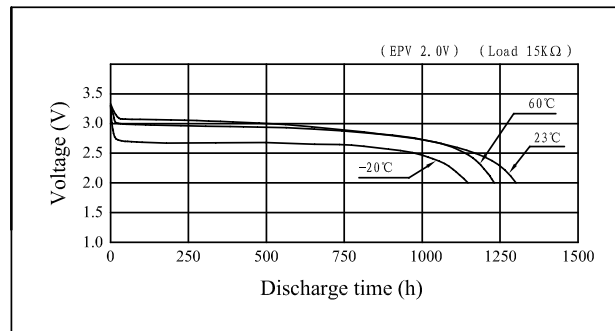


- *1. Nominal Capacity is determined to an end of 2.0V when the battery is allowed to discharge at a standard Load level at 23 °C
- *2. Current Value is determined to be the level at which 40% of the nominal capacity is obtained with an end voltage of 2.0V at 23 °C
- *3. Current Value for obtaining 2.0V cell voltage when pulse is applied for 15seconds at 40% discharge depth at 23 °C

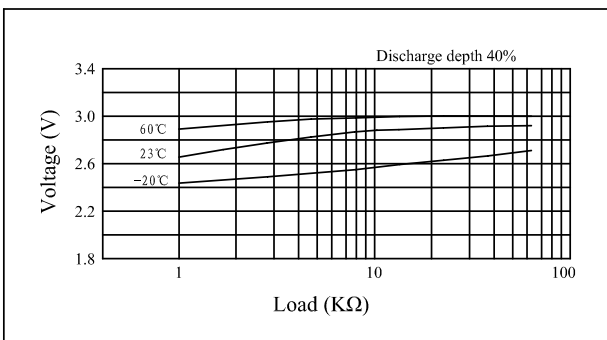
Discharge characteristics



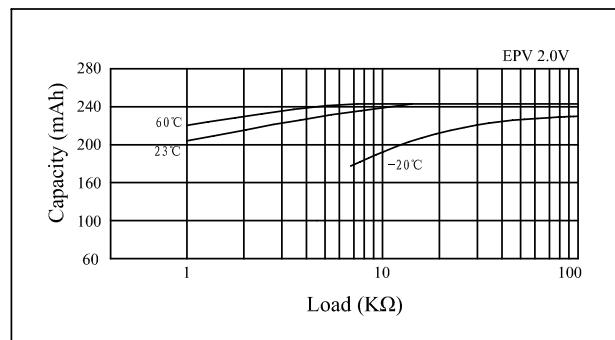
Temperature Characteristics



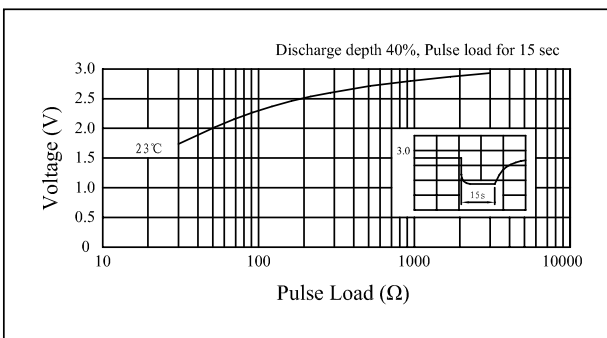
Load vs. Operating voltage



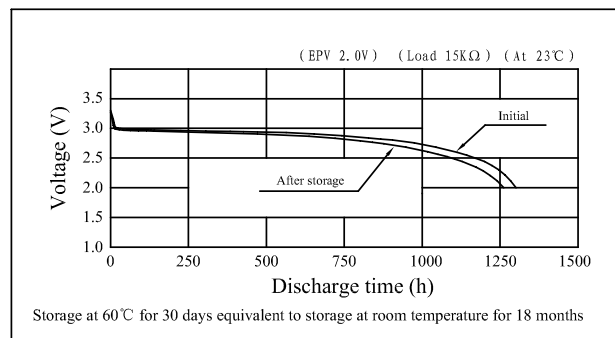
Load vs. Capacity



Pulse discharge characteristics



Storage characteristics



**Note: The data in this document are for descriptive purposes only and subject to change without prior notice.