

# Rechargeable Ni-MH Button Cell

High Temperature Type

**MH-250/HT**

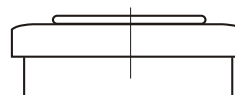
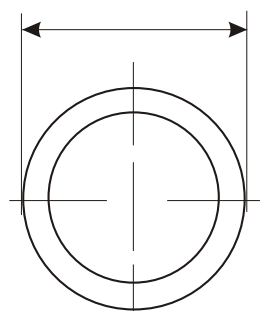
## Specification

No.	Item	Characteristics
1	Chemistry	Nickel Metal Hydride / Potassium Hydroxide Electrolyte
2	Nominal Voltage	1.2V
3	Typical Capacity	280mAh
4	Approximate weight	11.3g
5	Dimension	<b>Diameter:</b> 25.2mm ± 0.2mm <b>Height:</b> 7.4mm ± 0.2mm
6	Storage Temperature Range	
	< 30 days	-40°C - 80°C
	< 90 days	-40°C - 65°C
	< 1 year	-40°C - 50°C
7	Operating Temperature Range	
	During discharge	-20°C - 80°C
	During charge	0°C - 80°C
8	Charging Method	
	Typical Charging	28mA for 14 - 16 hours
	Accelerated Charging (20°C)	56mA for 7 hours
	Fast Charging (Time controlled, voltage control recommended)	140mA for 3 hours*
	Trickle Charging	8.4mA
9	Overcharge (20°C)	28mA continuous
10	Charge Retention at 20°C (Capacity available after 1 month Storage at 20°C)	90%
11	Life Expectancy (typical):	
	IEC Cycle	500 Cycles
	Trickle Charge	up to 5 years (20°C)

\* For fully discharged cells, 20°C

(Not to scale)

∅ 25.2 ± 0.2



7.4 ± 0.2

Unit: mm

\*\*Note: The data in this document are for descriptive purposes only and subject to change without prior notice.