

# Rechargeable Ni-MH Button Cell

High Temperature Type

**MH-60/HT**

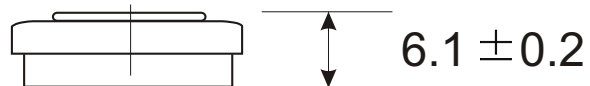
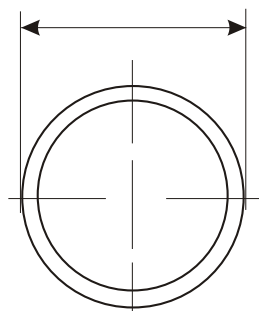
## Specification

No.	Item	Characteristics
1	<b>Chemistry</b>	Nickel Metal Hydride / Potassium Hydroxide Electrolyte
2	<b>Nominal Voltage</b>	1.2V
3	<b>Typical Capacity</b>	80mAh
4	<b>Approximate weight</b>	3.5g
5	<b>Dimension</b>	<b>Diameter:</b> 15.2mm ± 0.2mm <b>Height:</b> .6.1mm ± 0.2mm
6	<b>Storage Temperature Range</b>	
	< 30 days	-40°C - 80°C
	< 90 days	-40°C - 65°C
	< 1 year	-40°C - 50°C
7	<b>Operating Temperature Range</b>	
	During discharge	-20°C - 80°C
	During charge	0°C - 80°C
8	<b>Charging Method</b>	
	Typical Charging	8mA for 14 - 16 hours
	Accelerated Charging (20°C)	16mA for 7 hours
	Fast Charging (Time controlled, voltage control recommended)	40mA for 3 hours*
	Trickle Charging	2.4mA
9	<b>Overcharge (20°C)</b>	8mA continuous
10	<b>Charge Retention at 20°C</b> (Capacity available after 1 month Storage at 20°C)	90%
11	<b>Life Expectancy (typical):</b>	
	IEC Cycle	500 Cycles
	Trickle Charge	up to 5 years (20°C)

\* For fully discharged cells, 20°C

(Not to scale)

∅ 15.2 ± 0.2



Unit: mm

\*\*Note: The data in this document are for descriptive purposes only and subject to change without prior notice.